

**Govt. of India**  
**Ministry of Human Resource Development**  
**Dept. of School Education and Literacy**  
**Mid-Day Meal Division**

**PAB-MDM meeting**  
**to consider and approve AWP&B 2020-21**

**(Date of the meeting: 21.05.2020)**



**APPRAISAL NOTE**

**STATE: MADHYA PRADESH**

**INDEX**

<b>Sl. No.</b>	<b>CHAPTER</b>	<b>Page no.</b>
	Pre-requisite steps for submission of AWP&B	<b>1</b>
<b>Part-A</b>	General Information	<b>2</b>
<b>Part-B</b>	Review of performance during 2019-20	<b>3-23</b>
<b>Part-C</b>	Recommendations of Appraisal team and quantification of variables for central assistance during 2020-21	<b>24-30</b>
<b>Part-D</b>	Fact sheet.	<b>31-49</b>

## Status on Pre requisite steps required for submission of AWP&B

Pre-requisite step	Status
Plan should be approved by SSMC Meeting	Yes
100% payment of honorarium shall be made to cook cum helpers up to December, 2019.	No
100% payment of cost of food grains shall be made to NAN up to 31st December, 2019.	No
Separate and detailed MME plan.	No
Bank account should be opened for cook cum helpers	Yes
Plan should also be submitted through MDM-MIS	No
Action Taken Note on the assurances given by the State during PAB meeting 2019-20.	No
Annual and Monthly data entry for the FY 2019-20 should be completed up to March, 2020.	No
Plan should be submitted within the scheduled date in hard and soft copies both.	Yes

### Issues

- i. Delay in the release of funds upto 2 months to the implementing agencies.
- ii. Supply chain issues - resulting in some districts having negative balance of foodgrains (Datia is having negative unspent balance of 1637 MT, whereas its annual allocation is only 1328 MT), on the other hand some district having huge surplus (Khandwa is having Unspent balance of 6516 MT foodgrains, against the annual allocation of 2812 MT).
- iii. Only 5% (Avg of 2019) schools reporting under AMS.
- iv. De-worming tablets given to 56% children only.
- v. Only 3 meal samples from Bhopal tested from laboratory.
- vi. Construction of 5807 kitchen-cum-stores yet to start.
- vii. Less number (149) DLC meetings against mandated 612 meetings. No DLC in Datia and Panna.
- viii. Less coverage against enrolment in primary (72%) and Upper Primary (71%)
- ix. Negative cooking cost with districts impacting the scheme adversely.
- x. Social Audit in 35 districts entrusted to Gram Panchayats/Sabha.
- xi. Transport Assistance utilization 32% against mandated 75% till December, 2019.

### Best Practices

- i. State contributes Rs.1000/- for honorarium to CCH per month over and above its minimum mandatory share.
- ii. 100 ml Milk provided to Primary class students thrice a week from State's resources.
- iii. 75,865 Women SHG's engaged for preparation of mid-day meal.
- iv. "MP MDM Portal" developed for e-transfer of funds to SHGs/SMC/NGOs.
- v. Ag-mark or Branded ingredients used for mid-day meal.
- vi. Antodaya Card Holders, Senior Citizens, Mothers of students and Teachers taste the mid-day meal daily.

- vii. 1 Task Manager and 2 Quality Monitors inspect 50 schools each in a month.
- viii. LPG available in 100% schools.
- ix. Medical Contingency Plan painted in every school.

## **Part-A : General Information**

Despite achieving near Universalisation of access to elementary education and increase in the provisioning of infrastructure and teachers in schools, the problems of retention, dropout and low learning levels of children still persist. There are clear indications that poverty has a negative effect on all key educational indicators of children. On both weight for age and height for age criteria, about half the children in Madhya Pradesh are not up to the mark and one fourth have severe impact on them. Besides, there are significant social disparities prevailing among the social strata to which they belong.

Empirical observations and data available show that children with low health and nutritional levels, or those who support family tend to be the ones whose attendance is irregular, and whose participation in school processes tend to be conspicuously low. Therefore, there is a strong case for child development programs to combine the components of education with health and nutrition, to address their problems comprehensively.

To ensure improved enrolment and retention, and to address the concerns of poverty, social disparity, socio-economic division and gender inequality, the mid-day meal scheme is an effective strategy.

The National Programme of Mid-Day Meal (MDM) was formally launched on 15th August, 1995. The implementation of MDM was started in Madhya Pradesh in 1995. Initially the scheme, provided for distribution of dry rations or Daliya (Porridge) as per availability of financial resources with implementation agency. In the academic year 2007-08, the implementation of MDM was extended to middle schools of Educationally Backward Blocks of Madhya Pradesh and eventually from the year 2008-09 the implementation of MDM was extended to all blocks of Madhya Pradesh, as per instructions of Government of India. The menu prescribed for middle schools is same as that for primary schools but with increased quantity. The Mid day meal scheme has helped in giving a boost to achieve the goal of Universalization of elementary education, by increasing retention rate and attendance. It has also helped in creating additional livelihood opportunities for the members of the women SHG's and cook cum helpers engaged in its implementation.

### **The major objectives of the revised Mid-Day Meal Scheme are:**

- i. Universalization of education.
- ii. To provide cooked Mid-Day Meal to the students of the government and government aided Primary and Upper Primary schools of the State
- iii. To improve the nutritional health standard of growing children.

- iv. To increase retention and attendance and reduce dropout rate of children in government and government aided schools/Madarsas/Maqtabs and Special Training Centers.
- v. To attract poor children to school by providing Mid-Day Meal.
- vi. To increase the employment opportunities at the village level by linking rural poor with income generating activities related to Mid-Day Meal Scheme.

**1. Basic Information:**

**(Year 2019-20)**

S. No.	INDICATORS	STATUS		
		PRY	U PRY	TOTAL
<b>1. No. of Institutions</b>				
i)	Approved by MDM-PAB for 2019-20	81843	31217	113060
ii)	Covered during the year	81715	31193	112908
<b>1. No. of Children</b>				
i)	Approved by MDM-PAB	2972829	1891732	4864561
ii)	Enrollment as on 30.9.2019	4069825	2594421	6664246
ii)	Average No. of children availed MDM during 01.04.2019 to 31.12.19	2924837	1836109	4760946
<b>2. Coverage of children as per Quarterly Progress Report (QPR)</b>				
i)	Average no. of children availed MDM as per <b>QPR-1</b>	2824187	1816278	4640465
ii)	Average no. of children availed MDM as per <b>QPR-2</b>	2962948	1913006	4875954
iii)	Average no. of children availed MDM as per <b>QPR-3</b>	2924837	1836109	4760946
<b>3. No. of Working Days</b>				
i)	Approved for 2019-20 for first three quarters	170	170	.
ii)	Covered during <b>2019-20</b>	162	162	
<b>4. Per unit cooking cost per child per day (in Rs.)</b>				
AVERAGE UNIT COOKING COST PCPD		4.48	6.71	
State's contributions in cooking cost per child per day		1.79	2.68	

# The minimum mandatory State Share is Rs. 1.79 and Rs. 2.68 per child per day for Primary and Upper Primary respectively.

## **Part-B : Review of Performance in 2019-20 (01.04.19 to 31.12.2019)**

Based on the information provided by the State Government in its AWP&B 2020-21, the performance during 2019-20 (01.04.19 to 31.12.2019) was reviewed. The major issues in implementation during 2019-20 are summarized as under: -

### **2.0 Coverage of Institutions :**

#### **Coverage in terms of No. of institutions**

#### **Difference between PAB Approval (Target) Vs No. of institutions covered (Achievement) –**

##### **i) PRIMARY**

The number of existing institutions = 81843  
Number of institutions covered during 01.04.19 to 31.12.19 = 81715 (100%)

##### **ii) UPPER PRIMARY WITH PRIMARY CLASSES**

The number of existing institutions = 0  
Number of institutions covered during 01.04.19 to 31.12.19 = 0 (%)

##### **iii) UPPER PRIMARY**

The number of existing institutions = 31217  
Number of institutions covered during 01.04.19 to 31.12.19 = 31193 (100%)

The information reveals that all the 152 eligible institutions in the State have not been covered under MDMS. Due to the reasons that 138 schools have zero enrolment; 6 Madarasa not accepting and mid-day meal schools due to management dispute and 8 schools merged

### **2.1 Coverage of Children**

#### **2.1.1 Coverage against Enrolment :**

##### **a) Primary - Coverage in terms of No. of children.**

#### **Difference between Enrolment vs Average No. of Children Aailed MDM (Achievement) (Refer Table 2.3 of the Analysis Sheet).**

Total Enrolment as on 30.09.2019 = 4069825  
Average number of children aailed MDM during 01.04.19 to 31.12.19 = 2924837(72%)

The average coverage in primary classes is 4% less than the national average. It is pertinent to mention coverage in Morena (56%), Bhind (60%) Ashoknagar, Chhatarpur, Guna, Khandwa, Mandsaur, Sheopur and Singroli (65%) are below the State average. The State needs to examine the less coverage in these poor performing districts.

**b) Upper Primary : Coverage in terms of No. of children. Difference between Enrolment vs Average No. of Children Aailed MDM (Achievement) – UPPER PRIMARY (Refer Table 2.4 of the Analysis Sheet).**

Total Enrolment as on 30.09.2019 = 2594421  
Average number of children aailed MDM during 01.04.19 to 31.31.19 = 1836109(71%)

The average coverage in upper primary classes in Madhya Pradesh is 5% less than the national average of 76%. The State may be advised to look into the reasons for the less coverage in Ratlam (51%), Morena(53%),Bhind (60%), Guna & Chhatarpur (61%), Shivpuri (62%), Singroli (64%), Ashoknagar, Sheopur, Shahdol, Satna, Mandsaur, Khandwa and in Harda (65%) and also in other poor performing districts and take necessary remedial action for increasing the coverage.

**2.1.2 Coverage against PAB-MDM approval:**

**a) Primary: Coverage in terms of No. of children. Difference between PAB Approvals**

**(Target) vs Average No. of Children Availing MDM (Achievement)  
(Refer Table 2.5 of the Analysis Sheet).**

The number of children approved by MDM PAB for 2019-20 = 2972829  
Average number of children aailed MDM during 01.04.19 to 31.12.19 = 2924837 (98%)

**b) Upper Primary: Coverage in terms of No. of children.**

**Difference between PAB Approval  
(Target) Vs Average No. of Children Availing MDM (Achievement)  
(Refer Table 2.6 of the Analysis Sheet).**

The number of children approved by MDM PAB for 2019-20 = 1891732  
Average number of children aailed MDM during 01.04.19 to 31.12.19 = 1836109 (97%)

**2.1.3 No. of Meals: Difference between No. of meal to be served (Target) Vs. No. of meals served (Achievement)- PY+U PY (Refer Table 2.7 of the Analysis Sheet).**

The number of meals to be served during 01.04.19 to 31.12.19 =5047.43 Lakh  
The number of meals served during 01.04.19 to 31.12.19 = 4746.52 Lakh(94%)

The number of meals served in Mandsaur (72%), Bhind (75%), Agar Malwa (85%), Rewa (86%) and Dewas, Satna, Shahdol and Umaria each (87%) is more than 10%

below the State average. The State may take necessary corrective measures in this regard.

## **2.2 FOODGRAINS (PRIMARY + UPPER PRIMARY)**

### **2.2.1 Level of Opening balance as on 01.04.19 :(Refer Table 3.2 of the Analysis Sheet).**

The opening balance of food grain with the State as on 01.04.2019 was 13639.25 MTs (10%). The total allocation of food grains during 2019-20 is 140083.24 MTs. However 18 districts had the negative opening balance in the range of (-) 1% to (-) 124% as on 01.04.2019. But 13 districts had more than 20% in the range of 21% to 235% opening balance. In both the situation of huge negative opening balance in 18 districts and huge unutilized food grain with 13 districts indicates food grain supply chain management problems, interruptions in the scheme or the scheme was not implemented properly in these districts. State needs to look into the reasons of having more than 20% of unutilized or negative of foodgrains in the above districts

### **2.2.2 Level of unspent balance as on 31.12.2019 : (Refer Table 3.3 of the Analysis Sheet).**

The unutilized food grain with the State as on 31.12.2019 was 9635.82 MTs which is 7% of the food grain allocation of 140083.24 MTs during 2019-20. Whereas 19 districts had negative closing balance of food grains ranging from (-) 1% to (-) 123%, the other districts had surplus food grain with them. Therefore, the State may streamline supply chain management of food grains to ensure uniform availability of food grains in all districts.

### **2.2.3 Availability of Food grains: (01.04.19 to 31.12.19) (Refer Table 3.5 of the Analysis sheet).**

The State Government Lifted 88307.27 MTs of food grain from NAN. The State had unutilized food grain of 13639.25 MTs with it at the beginning of the year. Thus the total availability of food grain with the State was 101946.52 MTs (73%). The district wise analysis of availability of food grains as on 31.12.2019 indicates that more than 100% upto 302% (Khandwa) food grain was available in 7 districts. It is observed that the State had not adjusted the opening balance of food grains lying with these districts while allocating the food grains. In Khandwa, the opening balance of food grains as on 10.04.2019 was 6605.16 MTs and the annual allocation was 2812.66 MTs. In spite of huge opening balance of food grains, the district was allowed to lift 1889.90 MTs of foodgrain. As against this huge availability of food grain with Khandwa, one district Datia had (-) 53% availability of food grain. The State needs to look into wide gap in the food grains availability in these districts.

### **2.2.4 Utilization of food grains: (Refer Table 3.7 of the Analysis sheet)**

The State utilized 90024.11 MTs (64%) of food grains against the allocation of 140083.24 MTs. Inter district variations in the utilization of food grains ranged from 49% (Agar Malwa & Bhopal) and Ratlam (81%). Such a wide variation needs to be streamlined.

### **2.2.5 Payment of cost of foodgrains to NAN: (Refer Table 3.9 of the Analysis sheet)**

The NAN has submitted bills for Rs. 2069.24 lakh during 2019-20 towards cost of food grains. The State has made payment of Rs.1551.93 lakh (75%) to FCI till 31<sup>st</sup> December, 2019. Thus the State had NAN pending bills for Rs.517.31 lakh. The State may ensure timely payment of all the bills received from the NAN.

## **2.3 COOKING COST (PRIMARY + UPPER PRIMARY)**

### **2.3.1 Level of Opening balance as on 01.04.19:(Refer Table 4.1.1 of the Analysis Sheet)**

The State had opening balance of Rs.7911.25 lakh as on 01.04.2019 which is 13% of the allocation of Rs.62711.67 lakh during 2019-20. The district wise analysis of opening balance of cooking cost as on 1.04.19 shows that in 14 districts reported negative opening balance at the beginning of the year. The highest negative opening balance was (-) 53% with Alirajpur, followed by Seoni (-29%) and Sagar (-21%). The negative opening balance indicates delay in the release of funds to the implementing agencies. How the meals were cooked when there was negative opening balance of cooking cost. However 12 districts reported more than 35% opening balance in the beginning of the year. The highest opening balance of 107% was with Khandwa. It indicates either interruption or less coverage of the children in the district. The State may look into the issue.

### **2.3.2 Level of closing balance as on 31.12.19:(Refer Table 4.1.2 of the Analysis Sheet)**

The closing balance of Rs.(-)3881.88 lakh (-6%) towards cooking cost. The inter-district closing balance ranged from (-57%) in Seoni to 60% in Agar Malwa. The negative closing balance indicates non-availability of funds with district/implementing agencies and availability of excess funds with districts show either less coverage or interruption in the scheme. Thus, there is a wide gap in the closing balance of cooking cost in various districts. The State may look into this aspect.

### **2.3.3 Utilization of Cooking cost :(Refer Table 4.5 of the Analysis Sheet).**

The State has utilized Rs. 41572.53 lakh (66%) against the allocation of Rs.62711.67lakh upto 31.12.2019 during 2019-20. Ideally, the State should have utilized 75% of the allocated funds by 31.12.2019.

## **2.4 Reconciliation of utilization and performance during 2019-20 (1.4.19 to 31.03.2020)**

### **2.4.1 Mismatch in utilization of Food grains vis-à-vis cooking cost: (Refer Table – 5.1 of Analysis Sheet)**

Ideally the percentage utilization of cooking costs and food grains should tally with each other. The data furnished in the AWP&B reveals that the level in utilization of cooking cost (66%) and food grains (64%). Thus, there is mismatch of 2% in the utilization of



cooking cost and food grains. The districts wise mismatch varies from (-17%) in Shahdol to 44% (Katni). This needs to be looked into.

## **2.5 Cook-Cum-Helper (PRIMARY + UPPER PRIMARY): (Refer Table – 6.2 of Analysis Sheet)**

The State has engaged 211713 cook-cum-helpers (CCH) against PAB approval of 231157. Thus, 19444 CCH are yet to be engaged by the State. The CCH are paid honorarium @ Rs.1000.00 per month per cook-cum-helper for ten months in a year. This honorarium is shared between the Centre and the State in 60:40 ratio. However, States can contribute more from their own resources. State Government of Madhya Pradesh is making additional contribution of Rs.1000/- per CCH per month from its share. These cook-cum-helpers receive honorarium through their bank accounts.

The State had opening balance of Rs.4301.29 lakh on 01.04.2019. An amount of Rs.25330.82 lakh was released for payment of honorarium to CCH. Thus Rs.29632.11 lakh (64%) were made available to the State as on 31.12.2019 during 2019-20. The expenditure is Rs. 29478.85 lakh (64%).

## **2.6 Utilization of MME(Refer Table – 7.2 of Analysis Sheet)**

The annual allocation for MME during 2019-20 is Rs. 1506.26 lakh. There was nil opening balance with the State on 01.04.2019. Rs.913.95 lakh were released to the State till 31.12.19. Thus the State had total availability of Rs.913.95 lakh with during 2019-20. The State has utilized Rs.868.24 lakh (58%) of the annual allocation.

## **2.7 Utilization of Transportation Assistance(Refer Table – 8.2 of Analysis Sheet)**

The State had opening balance of Rs. 187.35 lakh in the beginning of the year as on 01.04.2019. The annual allocation for Transport Assistance during 2019-20 is Rs.2101.25 lakh. The State had lifted 88307.27 MTs of food grain from NAN during the year. Thus, permissible transportation assistance @ 150 per quintal for carrying the food grains to schools is Rs.1324.61 lakh. The State has incurred the expenditure of Rs. 662.30 lakh (32%) on transportation of food grains from NAN godowns to schools. The State may ensure timely payment of all the Transportation Assistance bills.

## **2.8 Construction of Kitchen-cum-stores (Reference Table -9.1.3 of Analysis Sheet)**

The non-recurring central assistance of Rs.66147.85lakh has been released to the State for construction of kitchen-cum-stores in 103401 schools from 2006-07-2017-18. No additional kitchen-cum-stores were sanctioned to the State during 2018-19 and 2019-20. The State has constructed 94697 kitchen-cum-stores (92%) of the sanctioned units and utilized 92% of the allocated funds and construction work is in progress for 2897 kitchen-cum-stores. The construction work is yet to start for 5807 kitchen-cum-stores which were sanctioned at unit cost norms of Rs.60,000 per unit. The State is unable to construct these kitchen-cum-stores due to increase in the cost of construction. The State was advised to ensure completion of the construction of 2897 kitchen-cum-stores by 31st

December, 2020. For remaining 5807 kitchen-cum-stores, the State may construct them by providing additional funds from its resources or obtain fresh approval for their construction on plinth area norms by surrendering the funds sanctioned for the above kitchen-cum-stores along with the interest earned thereon.

The State has submitted a proposal for the construction of 1919 kitchen-cum-stores. The said proposal may be considered after receiving the physical and financial progress on the construction of earlier sanctioned kitchen-cum-stores.

## **2.8 A- Repair of 10 years old kitchen-cum-stores**

The State has submitted a proposal for the repair of 20,591 kitchen-cum-stores which were constructed 10 years ago at a cost of Rs.2059.10 lakh consisting of 1305.37 lakh central share and 753.73 lakh State Share. The State Government has not submitted the U-DISE number of the schools where repair work in the kitchen-cum-stores is to be carried out.

## **2.9 Procurement of Kitchen devices (Reference Table -9.2.3 of Analysis sheet)**

Central assistance of Rs. 5963.60 lakh has been released from 2006-07 to 2016-17 towards procurement of 119272 units of kitchen devices. The State has reported that all the sanctioned kitchen devices have been procured.

Central Assistance of Rs 4425.15 lakh was further released during 2014-15 and 2016-17 for the replacement of 88503 units of kitchen devices, against this the State has replaced all units of Kitchen devices.

The State has proposed replacement of 42638 kitchen devices during 2020-21 with an outlay of Rs.5410.25 Lakh which comprises of Rs.3246.15 lakh as central share and Rs. 2164.10 Lakh as State share.

Central assistance had been released to the State for the procurement of kitchen devices for 116707 schools from 2006-07 to 2014-15. Against them, the central assistance has also been released for replacement of 88,503 units of kitchen devices (39136 during 2014-15 and 49,367 during 2016-17) was released. Out of 116707 units of kitchen devices sanctioned till 2013-14, replacement has been made for 88,503 units of kitchen devices. Thus, 28204 (116707 – 88503) units of kitchen devices are still eligible for replacement.

In the meanwhile, 39,136 units of kitchen devices sanctioned during 2014-15 have become eligible for replacement. Thus total units of kitchen devices that can be replaced during 2020-21 become 67,304 (28204+39136). The State has proposed to replace 42,638 units of kitchen devices. This may be considered for approval.

## **3. Data Entry Status on the MIS Web Portal**

### **3.1. Annual and Monthly Data Entries during 2019-20**

In order to smooth function of MDMS, Ministry of HRD, MDM Division has developed web based monitoring system i.e. Web based MIS in collaboration with NIC. In this web portal UT/District/Block users have to make Annual and Monthly data entry into the web portal through

online. The UT should monitor data entry activities to be made timely manner by District/Block users into the portal. The Annual and monthly data entry status as on December, 2019 of the UT is given below: -

S.No.	District	Freeze Schools	No. of School Monthly Data Entry Status Report For Financial Year : 2019 - 2020												Avg.
			Apr	May	Jun	Jul	Aug	Sep	Oct	Nov	Dec	Jan	Feb	Mar	
1	AGAR MALWA	447	73	73	50	50	50	50	50	50	50	50	50	50	54
2	ALIRAJPUR	2306	2293	2293	1164	1118	1118	1108	1108	1108	1108	988	988	336	1228
3	ANUPPUR	1550	1547	1547	1547	1547	1547	1547	1547	1547	1547	396	183	0	1209
4	ASHOKNAGAR	1506	1497	1494	1491	1490	1490	1489	1489	1489	1489	1488	1010	859	1398
5	BALAGHAT	2752	2752	2752	2752	2752	2752	2752	2752	2752	2752	2752	2364	143	2502
6	BARWANI	2967	2958	2957	2957	2957	2957	2957	2957	2957	2957	2913	1771	476	2648
7	BETUL	2853	2706	2706	2542	2501	2471	2458	2427	2394	2357	1517	1009	235	2110
8	BHIND	1201	1056	1033	1005	1005	994	551	512	508	482	482	482	0	676
9	BHOPAL	1567	1502	1440	1432	1425	1418	1405	1388	1377	1373	1355	1069	0	1265
10	BURHANPUR	715	711	711	711	711	711	709	709	0	0	0	0	0	414
11	CHHATARPUR	2523	1518	1335	1077	1032	1017	1017	1017	1017	1017	1017	1017	378	1038
12	CHHINDWARA	3694	3670	3670	3669	3648	3633	3117	2981	2867	2862	1742	1318	0	2765
13	DAMOH	1999	1999	1999	1999	1999	1999	1999	1999	1999	1999	1999	165	0	1680
14	DATIA	1181	1181	1181	1181	1181	1165	1013	1002	982	0	0	0	0	741
15	DEWAS	2036	2035	2035	2035	2035	2035	2035	2035	2035	2035	0	0	0	1526
16	DHAR	4001	3962	3961	3935	3862	3763	3763	3648	3630	3610	2768	1188	508	3217
17	DINDORI	1866	1862	1862	1862	1862	1862	1862	1862	1862	1862	808	717	0	1524
18	EAST NIMAR	1487	635	627	626	626	623	619	603	461	353	352	274	58	488
19	GUNA	2263	2263	2263	2263	2263	2263	2263	2263	2263	2263	2263	1895	1356	2157
20	GWALIOR	1946	1944	1944	1944	1850	1758	1549	1549	1460	1460	1154	56	0	1389
21	HARDA	821	821	821	821	821	821	821	821	821	821	821	645	0	738
22	HOSHANGABAD	1664	1664	1664	1664	1664	1662	1661	1661	1661	1661	1420	672	24	1423
23	INDORE	1670	1670	1670	1670	1670	1670	1670	1670	1670	1670	1670	1433	331	1539
24	JABALPUR	2275	2275	2275	2275	2275	2275	2275	2275	2275	2275	1882	463	0	1902
25	JHABUA	2270	2266	2266	2266	2266	2266	2266	2266	2266	2265	1420	447	0	1855
26	KATNI	1832	1832	1832	1705	1705	1705	1705	1705	1705	1678	533	189	54	1362
27	KHARGONE	3306	3306	3306	3306	3306	3306	3306	3306	3306	3306	3306	3301	867	3102
28	MANDLA	2722	2639	2639	2639	2639	2639	2304	2303	2303	2303	2303	2303	2303	2443
29	MANDSAUR	1562	1084	1084	1084	1084	1084	131	131	130	129	128	128	0	516
30	MORENA	2572	2572	2572	2572	2572	2572	2572	2572	2572	2558	2558	2289	0	2332
31	NARSIMHAPUR	1694	1692	1692	1692	1692	1692	1692	1692	1677	1293	984	235	0	1336
32	NEEMUCH	1229	1229	1229	1229	1229	1229	1229	1229	1229	1229	0	0	0	922
33	PANNA	2337	2337	2337	2321	2310	2305	2303	2301	2296	2295	1183	978	832	1983
34	RAISEN	2517	2268	2257	2243	2243	2243	2164	2157	2060	1519	1212	312	0	1723
35	RAJGARH	2665	2607	2607	2607	2417	2413	2411	2411	2381	1729	546	219	0	1862
36	RATLAM	2052	2033	2033	2031	2029	2027	2027	2027	2027	2027	1917	60	0	1687
37	REWA	3897	3897	3897	3897	3897	3897	3897	3897	3897	3897	3897	3804	0	3565
38	SAGAR	3102	3089	3089	3089	3089	3089	3089	3088	3087	3067	3032	3028	1934	2981
39	SATNA	3527	3527	3527	3527	3527	3526	3525	3525	3525	3525	2466	2046	462	3059
40	SEHORE	2062	2060	2060	2060	2052	2052	2052	2052	2052	2052	2050	1455	50	1837

S.No.	District	Freeze Schools	No. of School Monthly Data Entry Status Report For Financial Year : 2019 - 2020												Avg.
			Apr	May	Jun	Jul	Aug	Sep	Oct	Nov	Dec	Jan	Feb	Mar	
41	SEONI	2897	2897	2897	2897	2897	2897	2897	2897	2897	2897	2897	2551	0	2627
42	SHAHDOL	2097	2091	2091	2091	2083	2077	2062	1721	1595	695	338	3	0	1404
43	SHAJAPUR	1268	702	700	699	699	697	640	492	492	483	466	205	0	523
44	SHEOPUR	1215	1209	1209	1209	1209	1209	1209	1209	1209	1209	2	0	0	907
45	SHIVPURI	2890	2613	2608	2136	2124	2074	2053	2034	2034	1814	319	319	319	1704
46	SIDHI	1756	1393	1393	1009	743	743	743	743	675	207	196	196	59	675
47	SINGRAULI	2049	2046	2046	2046	2036	2034	2034	2034	2019	1997	1853	1385		1957
48	TIKAMGARH	2308	2308	2308	2308	2308	2299	1890	1666	1625	1439	71	0	0	1519
49	UJJAIN	2125	2119	2119	2119	2119	2119	2119	2119	2119	2002	2001	1884	0	1903
50	UMARIA	1174	621	621	620	617	617	617	617	617	574	252	12	0	482
51	VIDISHA	2719	2719	2719	2719	2719	2719	2719	2719	2719	2719	2719	2609	894	2558
	TOTAL	109134	103750	103451	100793	99955	99584	96346	95238	93699	88911	68486	48727	12528	84289

### 3.1.1 Annual Data Entry Status:

#### School Annual Data Entry Status Report For Financial Year: 2019 - 2020

##### State: MADHYA PRADESH

S. No.	District	Total Schools	Completed Schools	Completed Percentage
1	AGAR MALWA	950	447	47%
2	BHIND	2531	1201	47%
3	SIDHI	2297	1756	76%
4	MANDSAUR	1870	1562	84%
5	EAST NIMAR	1665	1487	89%
6	CHHATARPUR	2756	2523	92%
7	SHAJAPUR	1349	1268	94%
8	JHABUA	2382	2270	95%
9	RATLAM	2114	2052	97%
10	TIKAMGARH	2372	2308	97%
11	RAJGARH	2728	2665	98%
12	NARSIMHAPUR	1733	1694	98%
13	UJJAIN	2168	2125	98%
14	BARWANI	3024	2967	98%
15	SHIVPURI	2927	2890	99%
16	DINDORI	1879	1866	99%
17	DEWAS	2050	2036	99%
18	UMARIA	1182	1174	99%
19	NEEMUCH	1236	1229	99%
20	RAISEN	2526	2517	100%
21	KATNI	1838	1832	100%
22	SAGAR	3112	3102	100%
23	BHOPAL	1572	1567	100%
24	BURHANPUR	717	715	100%

**School Annual Data Entry Status Report For Financial Year: 2019 - 2020**

**State: MADHYA PRADESH**

S. No.	District	Total Schools	Completed Schools	Completed Percentage
25	SHAHDOL	2102	2097	100%
26	ANUPPUR	1551	1550	100%
27	SEHORE	2063	2062	100%
28	MORENA	2573	2572	100%
29	DHAR	4002	4001	100%
30	ALIRAJPUR	2306	2306	100%
31	ASHOKNAGAR	1506	1506	100%
32	BALAGHAT	2752	2752	100%
33	BETUL	2853	2853	100%
34	CHHINDWARA	3694	3694	100%
35	DAMOH	1999	1999	100%
36	DATIA	1181	1181	100%
37	GUNA	2263	2263	100%
38	GWALIOR	1946	1946	100%
39	HARDA	821	821	100%
40	HOSHANGABAD	1664	1664	100%
41	INDORE	1670	1670	100%
42	JABALPUR	2275	2275	100%
43	KHARGONE	3306	3306	100%
44	MANDLA	2722	2722	100%
45	PANNA	2337	2337	100%
46	REWA	3897	3897	100%
47	SATNA	3527	3527	100%
48	SEONI	2897	2897	100%
49	SHEOPUR	1215	1215	100%
50	SINGRAULI	2049	2049	100%
51	VIDISHA	2719	2719	100%
	<b>Total</b>	<b>112868</b>	<b>109134</b>	<b>97%</b>

### 3.2. AUTOMATED MONITORING SYSTEM

SMS based Automated Monitoring System (AMS) is in operation in the State. SMS is sent by the schools mid-day-meal in charge on registered number Information collected under AMS is validated.

State / UT : MADHYA PRADESH														
S.No.	District	Total Institutions	Maximum number of institutions for which daily data transferred during the month											Avg
			April	May	June	July	August	September	October	November	December	January	February	

			2019	2019	2019	2019	2019	2019	2019	2019	2019	2020	2020	
1	Aagar	955	0	0	0	0	0	0	0	0	0	0	0	0
2	Alirajpur	2301	0	0	0	0	0	0	0	0	0	0	401	36
3	Anuppur	1580	0	0	1	1	0	0	8	7	22	247	348	58
4	Ashoknagar	1501	0	0	0	0	0	0	0	0	0	196	239	40
5	Balaghat	2811	0	0	0	0	0	0	9	922	1230	1386	1615	469
6	Barwani	3064	0	0	0	0	0	0	0	64	111	352	604	103
7	Betul	2905	0	0	0	0	0	0	0	376	482	508	784	195
8	Bhind	2556	6	1	3	5	17	46	33	19	16	167	725	94
9	Bhopal	1483	12	0	4	57	37	21	180	179	121	142	683	131
10	Burhanpur	750	0	0	0	0	0	0	0	0	13	26	496	49
11	Chhatarpur	2761	0	0	0	0	0	0	0	0	0	4	2344	213
12	Chhindwara	3782	0	0	0	0	0	0	0	0	0	222	1125	122
13	Damoh	2035	0	0	0	0	0	0	0	0	108	1361	1351	256
14	Datia	1283	0	0	0	4	6	1	136	88	52	142	44	43
15	Dewas	2211	0	0	0	0	0	0	6	133	245	887	1076	213
16	Dhar	4117	0	0	0	0	0	0	0	0	1	1	337	31
17	Dindori	1884	0	0	0	0	0	0	0	0	0	0	11	1
18	Guna	2284	0	0	0	0	8	0	10	22	5	5	537	53
19	Gwalior	2198	0	0	0	0	0	0	32	210	301	292	1132	179
20	Harda	857	8	0	5	7	21	20	20	174	129	377	241	91
21	Hoshangabad	1721	0	0	0	0	0	6	252	187	137	273	588	131
22	Indore	1836	9	0	5	8	7	7	81	69	43	469	381	98
23	Jabalpur	2388	0	0	0	0	0	0	0	0	1	458	624	98
24	Jhabua	2383	0	0	0	0	0	0	0	0	0	0	330	30
25	Katni	1902	0	0	0	0	0	0	0	0	0	482	483	88
26	Khandwa	1665	0	0	0	0	0	0	0	0	0	0	0	0
27	Khargone	3508	0	0	0	0	0	0	12	148	126	1868	998	287
28	Mandla	2722	0	0	0	0	0	0	0	13	4	9	27	5
29	Mandsaur	1859	0	0	0	0	0	0	0	0	0	26	780	73
30	Morena	2718	2	0	0	89	46	36	225	150	112	308	295	115
31	Narsimhapur	1733	0	0	0	0	0	0	27	51	32	261	548	84
32	Neemuch	1289	0	0	0	0	0	0	0	831	624	717	1079	296
33	Panna	2337	0	0	0	0	0	0	0	0	100	1984	2054	376
34	Raisen	2524	0	0	0	0	0	0	0	0	0	2	241	22
35	Rajgarh	2736	0	0	0	0	0	0	12	68	30	130	173	38
36	Ratlam	2227	0	0	0	0	0	0	0	0	1	127	533	60
37	Rewa	4635	0	0	0	0	0	0	0	0	0	82	405	44
38	Sagar	3155	0	0	0	0	0	0	0	1	207	1060	1484	250
39	Satna	3586	0	0	0	0	0	0	0	0	0	127	522	59
40	Sehore	2122	4	0	1	2	46	35	142	189	119	151	440	103
41	Seoni	2920	0	0	0	0	0	0	0	3	2	583	819	128
42	Shahdol	2116	0	0	0	0	0	0	0	0	0	3	710	65

State / UT : MADHYA PRADESH															
S.No.	District	Total	Maximum number of institutions for which daily data transferred during the month											Avg.	
			Institutions	April	May	June	July	August	September	October	November	December	January		February
			2019	2019	2019	2019	2019	2019	2019	2019	2019	2019	2020		2020
43	Shajapur	1350	0	0	0	0	0	0	0	0	0	2	2	377	35
44	Sheopur	1213	0	0	0	0	0	0	0	0	0	0	200	211	37
45	Shivpuri	2927	0	0	0	0	0	0	0	0	0	0	3	291	27
46	Sidhi	2349	0	0	0	0	0	0	0	0	0	0	106	564	61
47	Singrauli	2044	0	0	0	0	0	0	0	0	0	0	0	683	62
48	Tikamgarh	2371	0	0	0	0	0	0	0	0	0	0	176	763	85
49	Ujjain	2251	0	0	0	0	0	0	0	0	0	0	2	48	5
50	Umaria	1183	0	0	0	0	0	0	0	0	0	0	453	871	120
51	Vidisha	2775	263	1	392	766	569	349	294	310	1147	1473	2026	690	
	<b>Total</b>	<b>115863</b>	<b>304</b>	<b>2</b>	<b>411</b>	<b>939</b>	<b>757</b>	<b>521</b>	<b>1479</b>	<b>4214</b>	<b>5523</b>	<b>17850</b>	<b>33441</b>	<b>5949</b>	

#### 4. Comparison of Data from MIS and AWP&B

COMPONENT	MIS	AWP&B
Institutions	112868	112908
Working Days	173	162
Coverage of children	4386939	4760946
CCH engaged	213045	211713
CCH Hon. (Rs. in Lakhs)	25947.61	29478.85
Cooking Cost (Rs. in Lakhs)	287448.83	41572.53
Food Grains (in MTs)	725047.91	90024.11

#### 5. Fund Flow

Funds are directly released from State level to implementing agency .i.e., SHG/SMC/NGO etc. by e-PO through "MP MDM Portal". Honorarium of CCH is paid into their accounts by MDM Council through e-PO. Transportation assistance is released from State level to NAN @ 140/- per quintal and Rs. 10/- per quintal is paid to SHG. Cooking Cost is directly transferred to SHG/SMC/NGO's Bank Account. Honorarium of CCH is paid into their accounts by MDM Council through e-PO. MME is directly transferred to SMC's Bank Account through e-Po. Similarly Cost of food grain and transportation cost is directly released by e-PO through MP "MDM Portal" to NAN.

The status of release of funds during 2019 is given below :

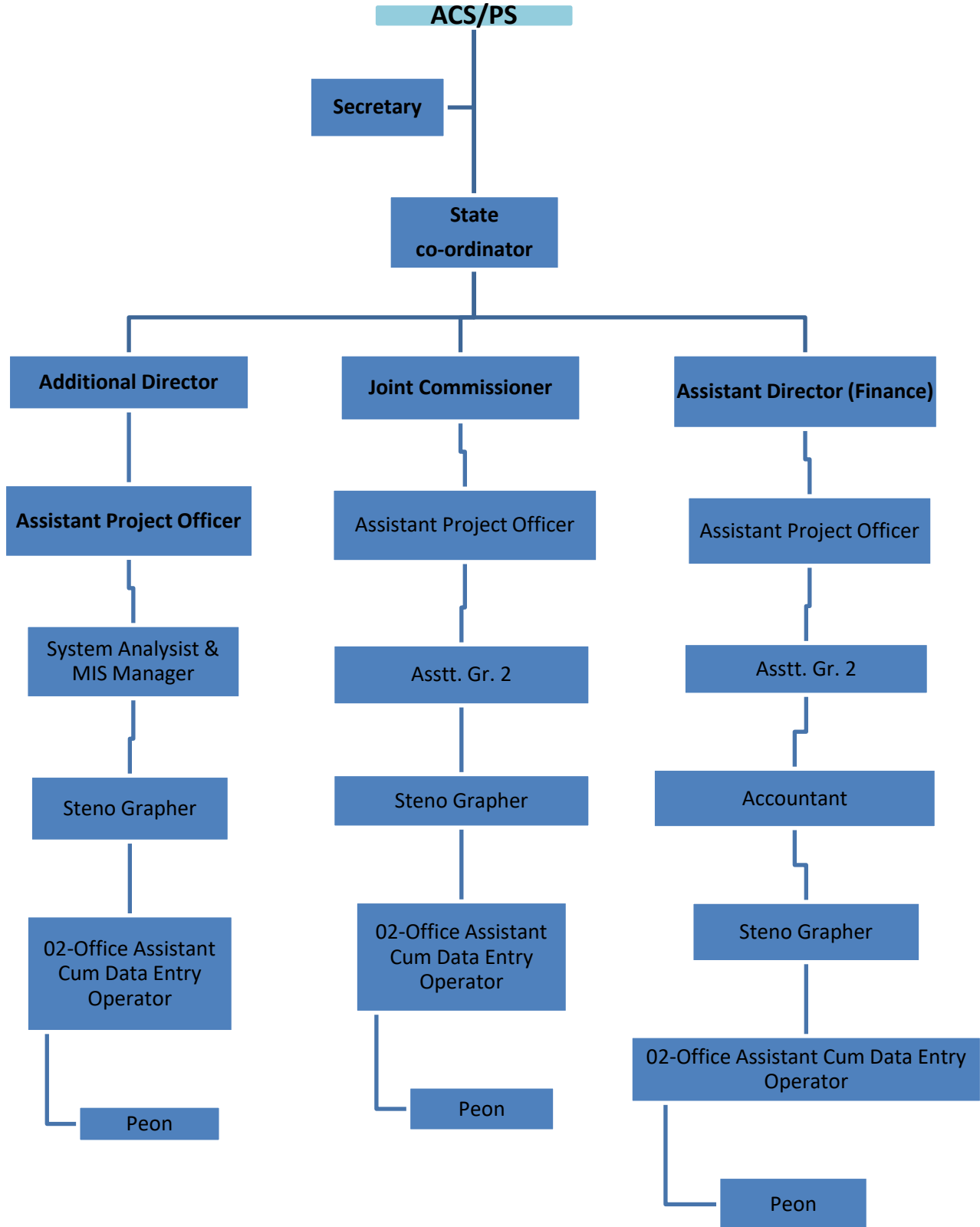
Installment	Date of receipt by				
	State	Directorate	District	Block	School
Ad-hoc grant	29.04.19	20.05.19	26.06.19		
Balance of 1st installment	16.10.19	12.11.19	15.11.19		
2nd Installment	*	*	*		

\*The second instalment of central assistance was released on 6<sup>th</sup> January, 2020. There is a delay of 2 months approximately in the release of funds from State to district. The State has not indicated the date for the release of funds from district to implementing agencies. The funds for the second installment released by MHRD during 2019-20 are yet to be released to districts/implementing agencies.

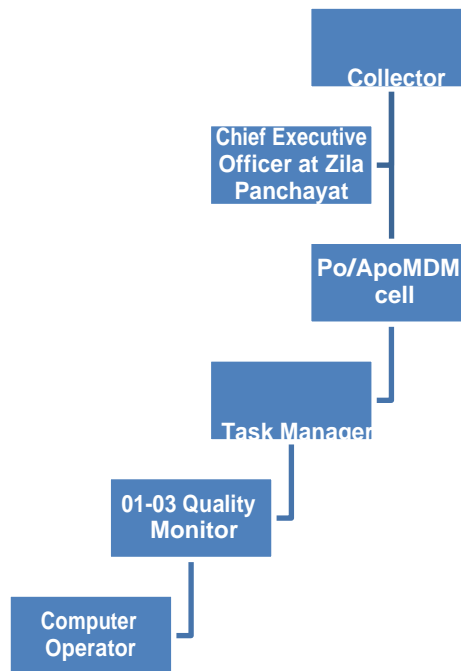


## 6. Management Structure

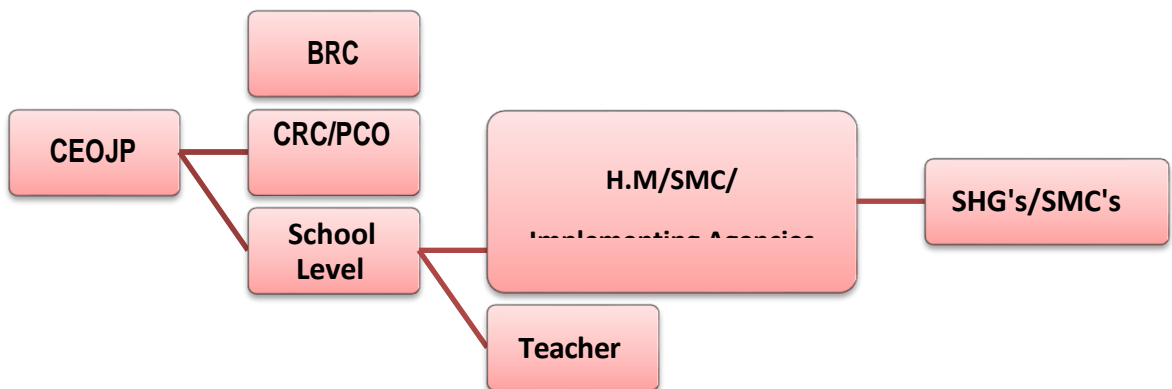
### A. STATE LEVEL-



**B. DISTRICT LEVEL-**



**C BLOCK LEVEL -**



**Process of Plan Formulation at State and District level:**

State Government has prepared the Annual work plan & Budget (AWP & B) by compiling Annual work plan formats prepared by each District. The information collected from "Samagra Shiksha", Urban Administration and Development Department and Tribal Department was also used in formulating the plan. The data collected from the Block Resource Coordinators (BRCs) and Cluster Resource Coordinators (CRCs)

from school level has been vetted by the Chief Executive Officers, Zila Panchayat (CEO, ZP) & District Project Coordinator of SarvaShiksha Abhiyan. State Government has called 51 districts in four groups in four different dates at State Level to finalize the Annual Work Plan of the State. State Government has followed a bottom up approach starting from the school level and has tried to address

## **6. Capacity Building of Cook-cum-helpers**

Out of 211713 cook-cum-helper engaged by the State, training was imparted by 2533 Master Trainers to 156537 cook-cum-helpers during 2019-20.

## **7. Grievance Redressal Mechanism**

State has a following comprehensive system of grievance redressal:

- i) The Department promotes Citizen Facilitation Center as the medium of grievance registration and an aisle for performance assessment of government officials.
- ii) The Govt. of Madhya Pradesh has commissioned the Integrated, Bilingual Automated and web-based Grievance Redressal System to enable seamless registration of complaints of the citizen. The grievance is forwarded to the 1st LEVEL OFFICER for resolving it within 07days failing which it is forwarded to the higher officer of the scheme.
- iii) Tele Samadhan Helpline provides a single platform to keep track of each grievance coming from the citizens. The citizens can seek information, register their grievances and track the status of grievance on phone from 7 AM to 11 PM daily.
- iv) Citizens can register their grievances through toll free number 181 which is now called CM Help-line from any of the 51 district of Madhya Pradesh.

The State has received 3442 complaints during 2019. Except 95 complaints, all other complaints have been resolved. The pending complaints relate to food grain issues (16), Non-payment of honorarium to Cook-cum-helpers (5), Centralized Kitchens (10), Quality and Quantity of food (29), Kitchen-cum-stores (20), Kitchen Devices (5) and Hygiene (10).

## 8. Testing of Meal by accredited labs

The State Government has instructed district administration to get cooked food sample tested from the accredited laboratories. However, out of 51 districts, 3 food samples were randomly collected from schools in Bhopal district and sent for testing to M/s Calilabs Private Ltd. Bhopal. The test reports of these samples are yet to be received from the laboratory. The State may advise its Food and Drugs Department to take food samples from the randomly selected schools in other districts and get them tested from the accredited or recognized labs.

## 9. Community participation:

i) **Tasting of meal:** Antyodya Card Holders, Headmaster/Nodal teacher in every school tastes food before it is served to students.

ii) **Monitoring & Supervision**

Mothers roster is maintained in every schools for supervising the preparation and tasting of meals.

iii) **Contribution by Community**

In a few districts of the State, reputed and wealthy people and other persons make contribution into MDM on special occasions like birthday, marriage anniversary, death anniversary, etc. by giving aid in cash or kind to schools. The details of contributions by the community during 2019-20 are as under:

Full meal in lieu of MDM			Additional Food Item				No. of schools received contribution		
No. of schools	Meals served	Value (In Rs)	No. of schools	Children benefitted	Name of the items	Value (In Rs)	In kind	In any other form	Value (In Rs)
17381	98143	173989.09	15202	588533	<i>Sweet Fruits, snacks, Khir Puri Icecream, Sweets, Biskuit, Namkeen,</i>	343554.12	26	126	1.7

## **10. Social Audit**

Gram Sabha undertakes the social audit of Mid Day Meal Scheme during its quarterly meetings. The gaps/discrepancies are recorded in the register and submitted to Block office for follow-up action. The Social Audit was undertaken by Gram Panchayat and Gram Sabha in all districts except 15 districts i.e. Agar Malwa, Alirajpur, Ashoknagar, Badwani, Bhind, Jabalpur, Katni, Khandwa, Mandsaur, Raisen, Ratlam, Tikamgarh, Ujjain and Umaria during 2019-20. The Social Audit was undertaken by MNREGS in Dewas, Sagar and Seoni.

PAB-MDM in its meeting held on 17<sup>th</sup> June, 2019 informed that under the provisions of section 28 of National Food Security Act, 2013 Social Audit of the scheme is mandatory. As per the MDM guidelines also, it is mandatory to conduct Social Audit in at least 20 schools in all districts. The Social Audit Units (SAU) set up under MNREGS, may be actively involved in conducting Social Audit of MDM in all districts.

The State has involved MNREGS in only 3 districts. It may undertake the Social Audit in other districts also as per the above decision of PAB-MDM and share the findings of Social Audit with Department of School Education and Literacy, Ministry of Human Resource Development, Government of India.

## **11. Monitoring & Supervision**

### **i) Management Information System**

The scheme is monitored through Management Information System with regard to the quality, quantity and regularity of the Programme at all levels. At the school level, Cluster Resource Coordinator (CRC) of School Education Department has been entrusted with the responsibility of intensive monitoring of every school under their jurisdiction, at least once in a month. He gets monthly information from concerned schools and submits it to Block Resource Personnel. (BRP) who in turn compiles it and submits to DPC of Zila Sikhsha Kendra. The DPC analyses the Report and submits it to the Chief Executive Officer, Zila Panchayat and Collector. Data is compiled from school/SHG level to cluster level to Block level at the block level it is entered in the MIS portal. At the State level Officer in-charge(MIS) reviews the data and send alerts to districts.

### **ii) Automated Monitoring System**

Automated Monitoring System is used for monitoring the scheme on near real time basis. The data on the number of beneficiaries availing mid day meal is sent to the central server on daily basis by the schools by using sms; ivrs, web-application or mobile app.

## 12. Rashtriya Bal Swasthya Karyakaram (RBSK):

Under School Health Programme (Rastriya Bal Swasthya Karyakram, there is provision of regular health check-up of students and also regular supply of iron folic acid, Vitamin A tablets, De-worming medicine and other essential micro- nutrients. Students with refractive error are also given spectacles. Health checkup of 6902207 children in 88324 schools has been carried out during 2019-20. Weekly Iron Folic Supplementation were provided to 6400106 school children in 88324 schools. De-worming tablets were given to 3712980 children in 79055 schools and spectacles were distributed to 34073 children identified with refractive error children in 45854 schools.

## 13. School Nutrition Gardens:

School Nutrition Gardens have been set up in 1998 schools out of 18988 schools where setting up of SNGs is possible. The setting up of kitchen gardens is in progress in 9976 schools. The State proposes to set up kitchen gardens in 9012 schools during 2020-21.

## 14. Non-Government Organization (NGO):

The State is providing Mid-Day Meal to 121976 children in 1987 schools through five Centralized Kitchens as per details given below:

Name of NGO	Coverage			
	District	Schools	Children	Distance (Kms)
Bhopal	Arya Navyog	549	41081	40
	Surya Charitable Society	387	2422	40
Gwalior	Akansha Samagra Vikash Samiti	542	36853	20
Jabalpur	Surya Charitable Society	203	21609	20
Satna	Nirmala Jyoti Mahila Mandal Rewa	306	20011	20
Total		1987	121976	

**Part: C - State Govt.'s Proposals and Recommendations of Appraisal Team for 2020-21**

<b>S. No.</b>	<b>Component</b>	<b>PAB Approval 2019-20</b>	<b>Proposal for 2020-21</b>	<b>Recommendations for 2020-21</b>
<b>1</b>	<b>Institutions</b>			
1.1	Primary	81966	81843	81843
1.2	Upper Primary	30869	31073	31073
1.3	NCLP	194	144	144
<b>2</b>	<b>Children</b>			
2.1	Primary	2972829	2924837	2924837
2.2	Upper Primary	1886988	1831704	1831704
2.3	NCLP	4744	4405	4405
<b>3</b>	<b>Working Days</b>			
3.1	Primary	241	247	247
3.2	Upper Primary	241	247	247
3.3	NCLP	314	313	313
<b>4</b>	<b>Cook cum Helper</b>			
4.1	Primary	231157	218125	218125
4.2	Upper Primary			
<b>5</b>	<b>Drought</b>			
5.1	Children (Pry)	0	0	0
5.2	Children (U Pry)	0	0	0
5.3	Working days	0	0	0
5.4	Cook-cum-helpers	0	0	0
<b>6</b>	<b>Non Recurring</b>			
6.1	Kitchen-cum-Stores*	2571	1919	1919
6.2	Repair of kitchen-cum-stores	31267	20591	20591
6.3	Kitchen Devices	0	0	0
6.4	Kitchen Devices (Replacement)	19028	42638	42638
6.5	Flexible funds for new interventions			
6.5.1	Supplementary Nutrition	Provisions of	Supplementary	Supplementary

	over and above existing provisions (including additional items already being provided by State) – <i>to children</i>	Chikki for 124 days in a year for 8,61,603 primary school children in 75 blocks	Nutrition Chikki (made of peanuts, jiggery) to 13,54,711 students of primary classes for 85 days in 85 blocks, identified in the National Family Health Survey as having high concentration of malnourishment.	Nutrition Chikki (made of peanuts, jiggery) to 13,54,711 students of primary classes for 85 days in 85 blocks, identified in the National Family Health Survey as having high concentration of malnourishment.
6.5.2	School Kitchen Gardens	67817	9012	9012
<b>7</b>	<b>Central Assistance (Rs in Lakh)</b>			
7.1	Regular	58444.72	60404.17	60404.17
7.2	Drought	0.00	0.00	0.00
7.3	Kitchen cum Store	3569.94	3054.78	3054.78
7.4	Repair of kitchen-cum-stores	1876.02	1235.46	1235.46
7.5	Kitchen Devices (new)	0.00	0.00	0.00
7.6	Kitchen Devices (Replacement)	1531.92	3246.15	3246.15
<b>7.7</b>	<b>Grand Total</b>	<b>65422.6</b>	<b>67940.56</b>	<b>67940.56</b>

\*Over and above the last year approval of 2571 units

**Part: D - State Govt.'s Proposals and Recommendations of Appraisal Team for Provision of MDM during summer vacations 2020-21 as one time measure**

S. No.	Component	PAB Approval 2019-20	Proposal for 2020-21	Recommendations for 2020-21
<b>1</b>	<b>Children</b>			
1.1	Primary	NA	4069825	4069825
1.2	Upper Primary	NA	2594421	2594421
<b>2</b>	<b>Working Days</b>			



2.1	Primary	NA	37	37
2.2	Upper Primary	NA	37	37
3	<b>Central Assistance (Rs in Lakh)</b>			
3.1	One time assistance	NA	9906.30	9906.30

\*\*\*\*\*

**State: MADHYA PRADESH**

**QUANTIFICATION OF CENTRAL ASSISTANCE FOR 2020-21**

**A. Food grains**

Sl. No.	Stage	No. of Children	Working days	Quantity (in MTs)		
				Rice	Wheat	Total
1	Primary (@ 100 gms per child per school day)	2924837	247	24562.78	26007.65	50570.43
2	U. Primary (@150 gms per child per school day)	1831704	247	23073.98	24431.27	47505.24
3	NCLP ( @150 gms per child per school day)	4405	313	70.32	74.45	144.77
4	Drought					
4.1	Primary	0	0	0	0	0
4.2	Upper Primary	0	0	0	0	0
<b>TOTAL</b>		4760946		47707.07	50513.37	98220.45
5	For summer vacations as an one time measure					
5.1	Primary (@ 100 gms per child per school day)	4069825	37	4825.24	10233.12	15058.35
5.2	U. Primary (@150 gms per child per school day)	2594421	37	4872.56	9526.47	14399.04
<b>TOTAL</b>		<b>6664246</b>		<b>9697.80</b>	<b>19759.59</b>	<b>29457.39</b>
<b>Grand Total</b>				<b>57404.87</b>	<b>70272.96</b>	<b>127677.84</b>

**B. Cost of Food-grains, Cooking cost, Transport Assistance, Hon. to cook-cum-helpers and Management Monitoring and Evaluation (MME)**

Sl. No.	Component/norm	Amount admissible
		(Rs. in lakh)
<b>1</b>	<b>2</b>	<b>3</b>
<b>Primary</b>		
1	Cost of Food grains @ Rs. 3000 per MT for rice and Rs.2000 per MT for wheat	1257.04
2	Unit Cooking Cost- Rs. 4.97 per child per day	
2.1	Central Share @ Rs 2.98 per child per day	21528.56
2.2	<b>Minimum Mandatory State Share @ Rs.1.99 per child per day</b>	14376.45
3	Transportation Cost @ Rs1500/ Per MT food grains	758.56
4	<b>Honorarium for cook cum Helper (Primary +Upper Primary)</b>	
4.1	<b>Central Share - @ Rs600/- for 10 months)</b>	13087.50

4.2	<b>State Share - @ Rs400/- for 10 months)</b>	8725.00
5	Management Monitoring and Evaluation (MME) @ 2.7% of the i) Cost of food grains ii) Cooking cost iii) Cost of transportation and iv) Honorarium to cook – cum-helpers	989.05
<b>Total Central Share for Primary</b>		<b>37620.71</b>

<b>Upper Primary</b>		
6	Cost of Food grains @ Rs. 3000 per MT for rice and Rs.2000 per MT for wheat	1180.84
7	<b>Unit Cooking Cost- Rs. 7.45 per child per day</b>	
7.1	<b>Central share @ Rs. 4.47 per child per day</b>	20223.66
7.2	<b>Minimum Mandatory State Share @ Rs 2.98 per child per day</b>	13482.44
8	Transportation cost @ Rs.1500/-Per MT food grains	712.58
9	<b>Honorarium for cook cum Helper included in Primary</b>	
9.1	<b>Central Share - @ Rs 600/- for 10 months)</b>	0.00
9.2	<b>State Share - @ Rs 400/- for 10 months)</b>	0.00
10	Management Monitoring and Evaluation (MME) @ 2.7% of the 1) Cost of food grains 2) Cooking cost 3) Cost of transportation and 4) Honorarium to cook – cum-helpers	597.16
<b>Total Central Share for Upper Primary</b>		<b>22714.24</b>
<b>NCLP</b>		
11	Cost of Food grains @ Rs. 3000 per MT for rice and Rs.2000 per MT for wheat	3.60
12	<b>Unit Cooking Cost- Rs. 7.45 per child per day</b>	
12.1	<b>Central share @ Rs. 4.47 per child per day</b>	61.63
12.2	<b>Minimum Mandatory State Share @ Rs 2.98 per child per day</b>	41.09
12.3	Transportation cost @ Rs 1500/- Per MT food grains	2.17
12.4	Management Monitoring and Evaluation (MME) @ 2.7% of the 1) Cost of food grains 2) Cooking cost and 3) Cost of transportation	1.82
<b>Total Central Share for NCLP</b>		<b>69.22</b>
<b>Total of Central Share (Primary + Upper Primary + NCLP)</b>		<b>60404.17</b>

**C. Drought (If Applicable) - Not Applicable**

**D. Non-recurring**

<b>Sl. No.</b>	<b>Component</b>	<b>Amount admissible (Rs in Lakh)</b>
1	Kitchen-cum-store – 1919 units	
1.1	Central share -	3054.78
1.2	Minimum Mandatory State Share -	2036.52
2	Repair of kitchen-cum-store – 20591 units	
2.1	Central share - (20591 unit x Rs. 6000 per unit)	1235.46
2.2	Minimum Mandatory State Share - (20591 unit x Rs. 4000 per unit)	823.64
3	Kitchen Devices (New)	
3.1	Central share -	0
3.2	Minimum Mandatory State Share -	0
4	Kitchen Devices (Replacement)- 42638 units	
4.1	Central share – (23687 unit x Rs. 6000 per unit) + (15724 unit x Rs. 9000 per unit) + (2478 unit x Rs.12000 per unit) + (750 unit x Rs. 15000 per unit)	3246.15
4.2	Minimum Mandatory State Share - (23687 unit x Rs.4000 per unit) + (15724 unit x Rs. 6000 per unit) + (2478 unit x Rs.8000 per unit) + (750 unit x Rs. 10000 per unit)	2164.10
<b>Total Central Share (Non-recurring)</b>		<b>7536.39</b>

**E. Flexible funds for new interventions****(Rs in Lakh)**

<b>S.No.</b>	<b>Component</b>	<b>Centre Share</b>	<b>Minimum Mandatory State share</b>	<b>Total</b>
<b>1</b>	Serving of MDM during regular school working days – from Table B	60404.17	36624.98	97029.15
<b>2</b>	Maximum admissible Funds for Flexibility for new interventions (5% of 1 above)	3020.21	1831.25	4851.46

<b>PAB Approvals for flexible funds</b>				
i)	School Nutrition Gardens(9012 SNG @ Rs 5000 each)	270.36	180.24	450.60
ii)	Supplementary Nutrition Chikki (made of peanuts, jiggery) to 13,54,711 students of primary classes for 85 days in 85 blocks, identified in the National Family Health Survey as having high concentration of malnourishment.	2625.43	1750.29	4375.72
<b>PAB Approval - Total Flexible fund - (E)</b>		<b>2895.79</b>	<b>1930.53</b>	<b>4826.32</b>

**F. Cost of Food-grains, Cooking cost, Transport Assistance for providing MDM or FSA during summer vacations as one time measure**

Sl. No.	Component/norm	Amount admissible
		(Rs. in lakh)
1	2	3
<b>Primary</b>		
1	Cost of Food grains @ Rs. 3000 per MT for rice and Rs.2000 per MT for wheat	349.42
2	<b>Unit Cooking Cost- Rs. 4.97 per child per day</b>	
2.1	Central Share @ Rs 2.98 per child per day	4487.39
2.2	<b>Minimum Mandatory State Share @ Rs.1.99 per child per day</b>	2996.61
3	Transportation Cost @ Rs1500/- Per MT food grains	225.88
<b>Total Central Share for Primary</b>		<b>5062.69</b>
<b>Upper Primary</b>		
4	Cost of Food grains @ Rs. 3000 per MT for rice and Rs.2000 per MT for wheat	336.71
5	<b>Unit Cooking Cost- Rs. 7.45 per child per day</b>	
5.1	<b>Central share @ Rs. 4.47 per child per day</b>	4290.91
5.2	<b>Minimum Mandatory State Share @ Rs 2.98 per child per day</b>	2860.61
6	Transportation cost @ Rs.1500/-Per MT food grains	215.99
<b>Total Central Share for Upper Primary</b>		<b>4843.61</b>
<b>Total central share for primary and upper primary</b>		<b>9906.30</b>

**G. Total Requirement of Funds for 2020-21**

**(Rs. in lakh)**

<b>Component</b>		<b>Centre Share</b>	<b>Minimum Mandatory State share</b>	
Recurring	Normal	60404.17	36624.98	97029.15
	Drought	0.00	0.00	0.00
Non- recurring		7536.39	5024.26	12560.65
<b>Grand Total</b>		67940.56	41649.24	109589.8
<b>For summer vacations as one time measure</b>		9906.30	5857.22	15763.52
<b>Grand Total including summer vacations</b>		<b>77846.86</b>	<b>47506.46</b>	<b>125353.32</b>

